

El bosque encantado

I. Silván de Tella, el espíritu de los bosques

José Antonio Chic

Moderato

Measures 1-6: Bass clef, common time (C). Six whole notes (G2, A2, B2, C3, D3, E3) connected by a slur.

Measures 7-12: Bass clef, common time (C). Measure 7: whole note G2. Measure 8: whole note A2. Measure 9: whole note B2. Measure 10: whole note C3. Measure 11: whole note D3. Measure 12: whole note E3. The piece ends with a double bar line and a repeat sign.

Measures 13-17: Bass clef, 7/8 time. Measure 13: quarter note G2. Measure 14: quarter note A2. Measure 15: quarter note B2. Measure 16: quarter note C3. Measure 17: quarter note D3. The tempo changes to **Allegro** at measure 13 and back to **Moderato** at measure 18.

Measures 18-22: Bass clef, 7/8 time. Measure 18: quarter note G2. Measure 19: quarter note A2. Measure 20: quarter note B2. Measure 21: quarter note C3. Measure 22: quarter note D3. The tempo changes to **Allegro** at measure 23.

Measures 23-26: Bass clef, 7/8 time. Measure 23: quarter note G2. Measure 24: quarter note A2. Measure 25: quarter note B2. Measure 26: quarter note C3. The tempo changes to **Poco adagio** at measure 27.

Measures 27-31: Bass clef, 7/8 time. Measure 27: quarter note G2. Measure 28: quarter note A2. Measure 29: quarter note B2. Measure 30: quarter note C3. Measure 31: quarter note D3.

Measures 32-37: Bass clef, 7/8 time. Measure 32: quarter note G2. Measure 33: quarter note A2. Measure 34: quarter note B2. Measure 35: quarter note C3. Measure 36: quarter note D3. Measure 37: quarter note E3.

Measures 38-42: Bass clef, 7/8 time. Measure 38: quarter note G2. Measure 39: quarter note A2. Measure 40: quarter note B2. Measure 41: quarter note C3. Measure 42: quarter note D3. The tempo changes to **Allegro** at measure 43.

Measures 43-47: Bass clef, 7/8 time. Measure 43: quarter note G2. Measure 44: quarter note A2. Measure 45: quarter note B2. Measure 46: quarter note C3. Measure 47: quarter note D3. The tempo changes to **Allegro** at measure 48.

Measures 48-52: Bass clef, 7/8 time. Measure 48: quarter note G2. Measure 49: quarter note A2. Measure 50: quarter note B2. Measure 51: quarter note C3. Measure 52: quarter note D3. The tempo changes to **Allegro** at measure 53.

Measures 53-57: Bass clef, 7/8 time. Measure 53: quarter note G2. Measure 54: quarter note A2. Measure 55: quarter note B2. Measure 56: quarter note C3. Measure 57: quarter note D3. The tempo changes to **Allegro** at measure 58.

Measures 58-62: Bass clef, 7/8 time. Measure 58: quarter note G2. Measure 59: quarter note A2. Measure 60: quarter note B2. Measure 61: quarter note C3. Measure 62: quarter note D3. The tempo changes to **Allegro** at measure 63.

Violoncello

I. Silván de Tella, el espíritu de los bosques.

2
57

60



66



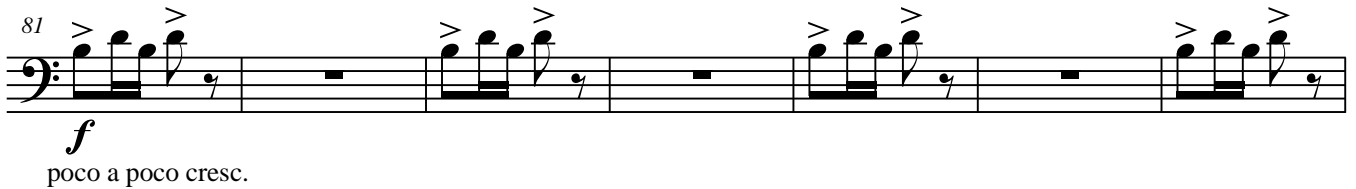
71



76



81



88

